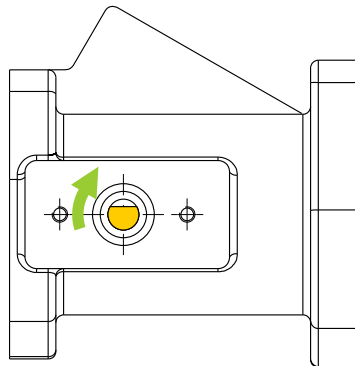




THROTTLE SHAFT ROTATES **CLOCKWISE** FROM  
CLOSED TO OPEN

**PTO FOR COUNTER-CLOCKWISE**



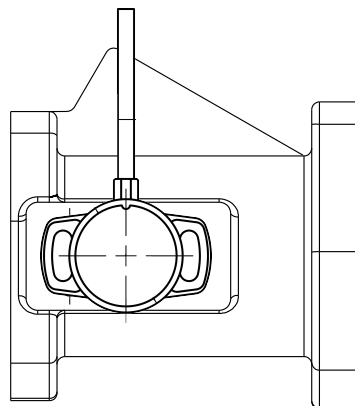
D-SHAFT ORIENTATION AT  
CLOSED THROTTLE  
(FLAT AT TOP OF SHAFT)  
SHAFT TURNS CLOCKWISE  
AS THROTTLE OPENS

WIRING FOR <b>CLOCKWISE-TO-OPEN</b> ROTATION		
Green		+5V
Yellow		Signal
Blue		Ground

Red		Not Used
White		Not Used
Black		Not Used

#### SENSOR SPECIFICATIONS

Closed Throttle -	1.2V Nominal
Open Throttle -	4.2V Nominal
IP Rating -	IP68 (minimum)
Operating Voltage -	5V +/-0.5V
Typical Life Cycle -	>50 million movements
Electrical Cable -	Raychem Spec 55, 24 AWG
Electrical Cable Sleeving -	Raychem DR25



TPS MOUNTING ORIENTATION

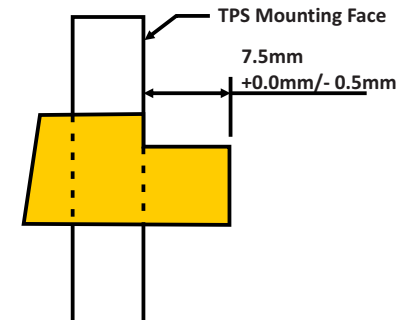
#### D-SHAFT SPECIFICATIONS

It's extremely important for reliable operation of this TPS that the D drive is a firm fit into the D receptacle in the Throttle Position Sensor.

D-Shaft Detail End View:



D-Shaft Detail Side View:



#### D-SHAFT WEDGE

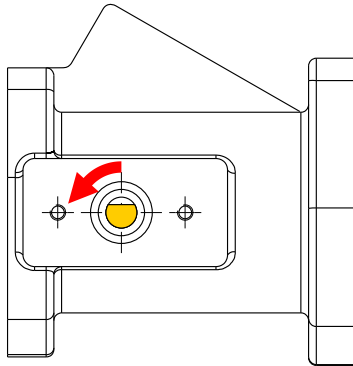
If the D on your shaft is less than 6.0mm, you must use the supplied 0.2mm shim to pack the flat of the D for positive shaft to sensor engagement.

If required, put a kink in the shim to increase engagement

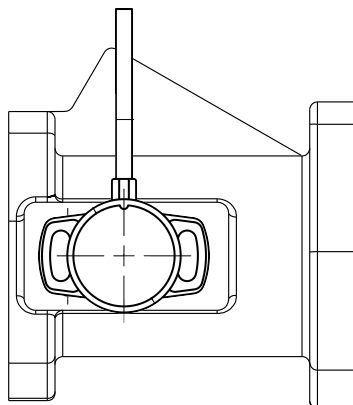




THROTTLE SHAFT ROTATES **COUNTER-CLOCKWISE**  
FROM CLOSED TO OPEN



**D-SHAFT ORIENTATION AT  
CLOSED THROTTLE  
(FLAT AT TOP OF SHAFT)  
SHAFT TURNS COUNTER-CLOCKWISE  
AS THROTTLE OPENS**



TPS MOUNTING ORIENTATION

**PTO FOR CLOCKWISE**

Green Not Used

Yellow Not Used

Blue Not Used

Red +5V

White Signal

Black Ground

**WIRING FOR COUNTER-CLOCKWISE-  
TO-OPEN ROTATION**

**SENSOR SPECIFICATIONS**

Closed Throttle -	1.2V Nominal
Open Throttle -	4.2V Nominal
IP Rating -	IP68 (minimum)
Operating Voltage -	5V +/-0.5V
Typical Life Cycle -	>50 million movements
Electrical Cable -	Raychem Spec 55, 24 AWG
Electrical Cable Sleeving -	Raychem DR25

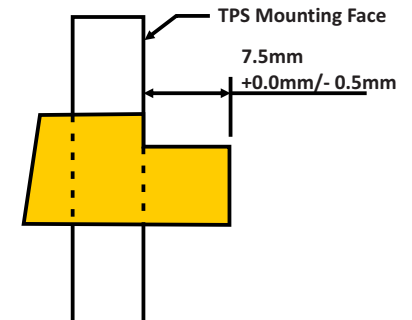
**D-SHAFT SPECIFICATIONS**

It's extremely important for reliable operation of this TPS that the D drive is a firm fit into the D receptacle in the Throttle Position Sensor.

D-Shaft Detail End View:



D-Shaft Detail Side View:



**D-SHAFT WEDGE**

If the D on your shaft is less than 6.0mm, you must use the supplied 0.2mm shim to pack the flat of the D for positive shaft to sensor engagement.

If required, put a kink in the shim to increase engagement

